

# Pipe Lever Scale

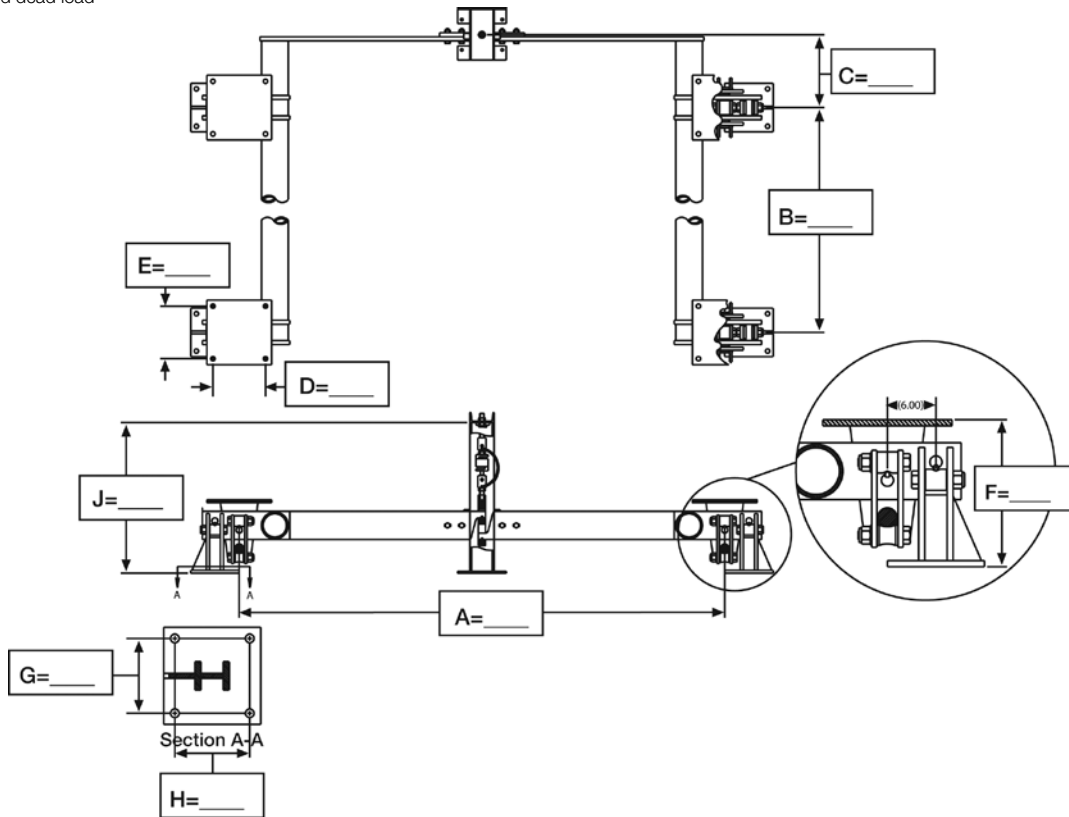
Please complete and fax this form to RLWS for pricing. Fax: (715) 234-6967

### STANDARD AND MINIMUM LEVER LENGTH SPECIFICATIONS.

	10K TOTAL LOAD*		25K TOTAL LOAD*		30K TOTAL LOAD*		40/50K TOTAL LOAD*	
	Standard	Minimum	Standard	Minimum	Standard	Minimum	Standard	Minimum
<b>A</b>	-	48.00in	-	48.00in	-	60.00in	-	60.00in
<b>B</b>	-	48.00in	-	48.00in	-	60.00in	-	60.00in
<b>C</b>	12.25in	4.50in	15.50in	7.00in	15.62in	7.00in	18.00in	7.00in
<b>D</b>	6.00in	6.00in	9.50in	8.75in	9.50in	8.75in	13.00in	12.00in
<b>E</b>	6.00in	6.00in	9.50in	8.75in	9.50in	8.75in	13.00in	12.00in
<b>F</b>	8.62in	8.62in	13.56in	13.56in	13.81in	13.81in	18.18in	18.18in
<b>G</b>	4.50in	3.50in	6.50in	4.75in	6.50in	4.75in	9.25in	6.50in
<b>H</b>	4.50in	3.50in	6.50in	4.75in	6.50in	4.75in	9.25in	6.50in
<b>J</b>	24.00in	24.00in	32.25in	32.25in	32.25in	32.25in	37.25in	37.25in

A x B must be equal to or less than 64 square feet, or consult factory.    A x B must be equal to or less than 100 square feet, or consult factory.    A x B must be equal to or less than 100 square feet, or consult factory.    A x B must be equal to or less than 100 square feet, or consult factory.

\* Live and dead load



<b>A</b>	
<b>B</b>	
<b>C</b>	
<b>D+</b>	
<b>E+</b>	
<b>F</b>	
<b>G**</b>	
<b>H**</b>	
<b>J</b>	

- 5K Total Load\*\*\*
- 10K Total Load\*\*\*
- 25K Total Load\*\*\*
- 30K Total Load\*\*\*
- 40K Total Load\*\*\*
- 50K Total Load\*\*\*
- Stainless steel hermetically-sealed load cell (specify model number)
- Mild steel load cell (specify model number)

**Material Type:** \_\_\_\_\_

**Finish:** \_\_\_\_\_

**NTEP:**     Yes     No

**NTEP Legal for Trade:**     Yes     No

\*\*\* Live and dead load

These drawings are not to be used as installation guidelines

+ Chair hole dimensions    \*\* Stand hole dimensions